

Support for_____

victims of Violence

against

W_____ **omen**

_____in **South Korea**



Women's Human Rights
Institute of Korea

Table of Contents

Violence against Women: definition, types, and related laws	1
Diagram of South Korea's Support System for Victims of Violence against Women	2
Women's Emergency Hotline 1366	4
Sunflower Center (Integrated Support Center for Victims of Sexual Violence)	5
Counseling Center for Victims of Violence against Women	6
Protective Facility for Victims of Violence against Women	7
Self-sufficiency Promotion Center	8
The Advocacy Center for Online Sexual Abuse Victims	9

| **The Women's Human Rights Institute of Korea(WHRIK)**, established as QUANGO(quasi-autonomous non-governmental organization) since 2019, aims to prevent violence against women and protect/support its victims. Main functions of WHRIK are supporting victim service organizations for strengthening their capacity by creating a victim-support network, providing consultations, and developing manuals, providing trainings to victim service providers and improve public awareness, etc.

| The copyright of this work belongs to Women's Human Rights Institute of Korea, and unauthorized reprinting and duplication without permission is prohibited.

| This work was published by Women's Human Rights Institute of Korea in March 2022. You can download PDF version on WHRIK website(stop.or.kr).

Violence against Women

: definition, types, and related laws

Violence against Women is “any act of gender-based violence that results in, or is likely to result in, physical, sexual, or mental harm or suffering to women, including threats of such acts, coercion or arbitrary deprivation of liberty, whether occurring in public or in private life.”¹⁾

• Sexual Violence

Sexual violence is a broad concept that encompasses physical, verbal, and psychological violence as any sexual act committed against the will of another person.²⁾

Related laws

- ACT ON SPECIAL CASES CONCERNING THE PUNISHMENT, ETC. OF SEXUAL CRIMES
- ACT ON THE PREVENTION OF SEXUAL ASSAULT AND PROTECTION, ETC. OF VICTIMS THEREOF

• Domestic Violence

Domestic violence is an act in which any member of the family, including husband and wife, parents and children, brothers and sisters, and other family members living together, intentionally or even unintentionally inflicts physical and/or psychological pain through abuse.²⁾

Related laws

- ACT ON SPECIAL CASES CONCERNING THE PUNISHMENT, ETC. OF CRIMES OF DOMESTIC VIOLENCE
- ACT ON THE PREVENTION OF DOMESTIC VIOLENCE AND PROTECTION, ETC. OF VICTIMS

• Sex trafficking

Sex trafficking “occurs when someone uses force, fraud, or coercion to cause a commercial sex act with an adult or causes a minor to commit a commercial sex act. A commercial sex act includes prostitution, pornography, and sexual performance done in exchange for any item of value, such as money, shelter, food, or clothes.”³⁾

Related laws

- ACT ON THE PUNISHMENT OF ARRANGEMENT OF COMMERCIAL SEX ACTS, ETC.
- ACT ON THE PREVENTION OF COMMERCIAL SEX ACTS AND PROTECTION, ETC. OF VICTIMS

• Online Sexual Abuse

Online sexual abuse encompasses acts of photographing-distributing-threatening to distribute-storing-displaying the body of another person without consent, as well as acts that infringe on the sexual autonomy and personal rights of others in cyberspace.²⁾

Related laws

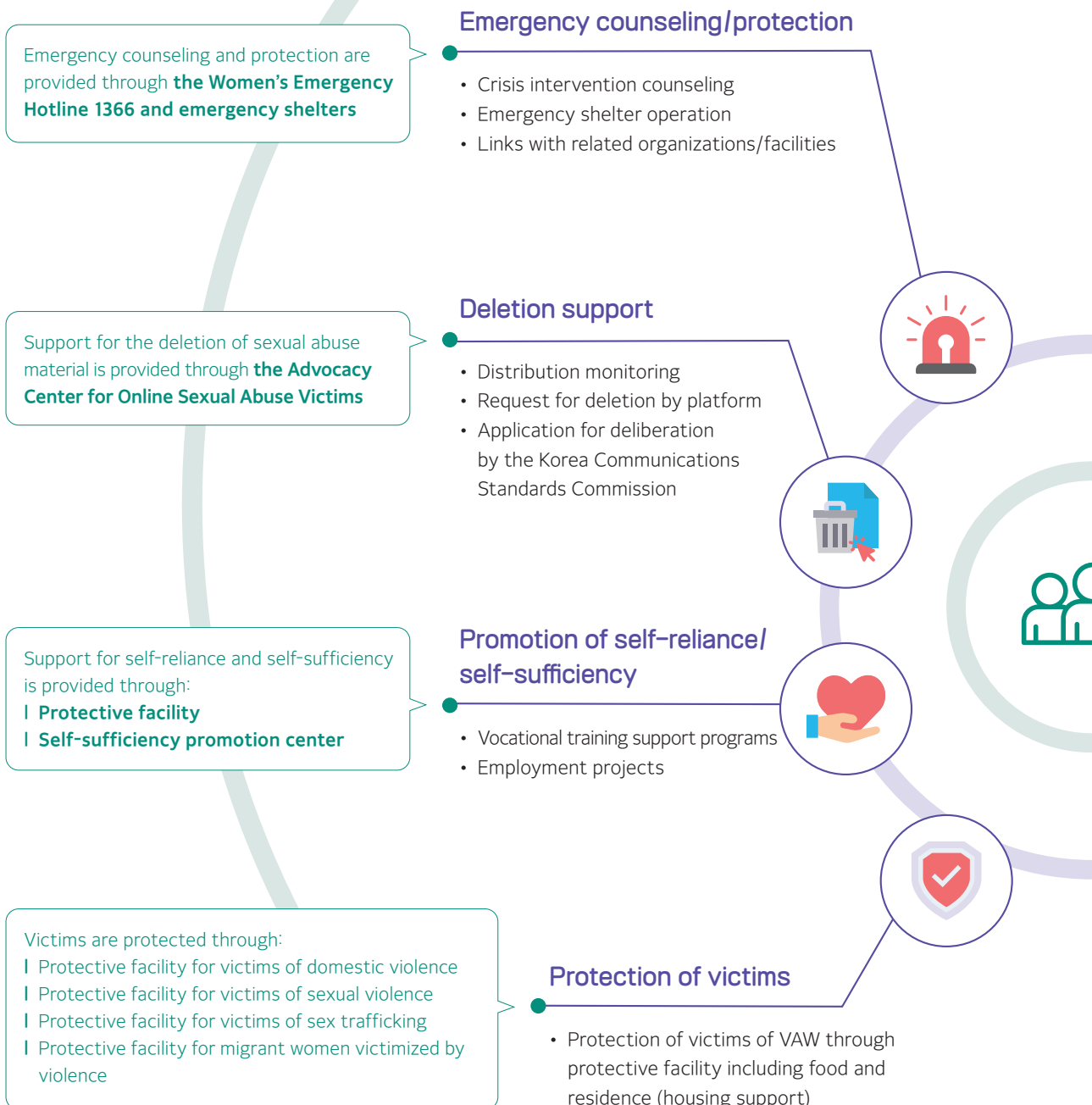
- ACT ON SPECIAL CASES CONCERNING THE PUNISHMENT, ETC. OF SEXUAL CRIMES, article 14

1) UN Declaration on the Elimination of Violence against Women, Article 1, 1993

2) Women's Human Rights Institute of Korea, <https://www.stop.or.kr>

3) Sharedhope International, <https://sharedhope.org>

Diagram of South Korea's Support System for Victims of Violence against Women



Professional counseling

- Counseling
- Medical and legal support
- Treatment and recovery programs
- Connection to protective facilities, and more

Professional counseling is provided through:

- | Counseling center for victims of domestic violence
- | Counseling center for victims of sexual violence
- | Counseling center for victims of sex trafficking
- | Counseling center for migrant women victimized by violence

Investigative/legal support

- Legal support including pro bono legal services and appointment of a lawyer
- Accompaniment during investigations by the police/prosecution and trials
- Counseling during investigations/ investigation of statements to the police and recording of statements (Sunflower Center)

Investigative and legal support is provided through:

- | **Counseling center**
- | **Sunflower Center**
- | **Protective facility for victims of VAW**

In addition,

free legal aid is provided through:

- Korea Legal Aid Corporation (domestic violence and sexual violence)
- KBA (Korean Bar Association) Legal Aid Foundation (domestic violence and sexual violence)
- Korea Legal Aid Center for Family Relations (domestic violence)
- Korea Gender Violence Crisis Center (sexual violence)

Medical care/psychological treatment support

- Links with hospitals and support for medical expenses
- Collection of evidence and support for medical and psychological treatment (Sunflower Center)

Support for medical and psychological treatment is provided through:

- | **Sunflower Center** (evidence collection and support for medical and psychological treatment)
- | **Counseling center**
- | **Protective facility for victims of VAW**

Support System for VAW Victims

Women's Emergency Hotline 1366

Roles and Functions



Usage Guide

Targets	Getting in touch with the Women's Emergency Hotline
People who require emergency rescue/protection or counseling for sexual violence, domestic violence, sex trafficking, sexual harassment, online sexual abuse, dating violence, stalking, and more	Call 1366 (or area code + 1366) from anywhere in South Korea

Danuri Call Center | 1577-1366

Provision of consultations with professional counselors for migrant women available in **13 languages, 24 hours per day, 365 days a year**

Sunflower Center

(Integrated Support Center for Victims of Sexual Violence)

Types and Usage Guide

Crisis Intervention type (16 centers)

Targets | Victims and their family members affected by sexual violence, domestic violence, and sex trafficking (for all ages and gender)

Hours of operation | 24 hours per day, 365 days per year

Support provided | Counseling services in response to crisis situations, medical and legal services, and support in the investigation process

Integrative type (16 centers)

Targets | Victims and their family members affected by sexual violence, domestic violence, and sex trafficking (for all ages and gender)

Hours of operation | 24 hours per day, 365 days per year

Support provided | Counseling and treatment after responding to crisis situation including longterm care, medical and legal services, and support in the investigation progress

Child/ Adolescent type (7 centers)

Targets | Victims and their family members affected by sexual violence under 19 years of age and those with intellectual disabilities of all ages and gender

Hours of operation | Monday - Friday, 9 a.m. - 6 p.m.

Support provided | Counseling and treatment services, medical and legal services, medical examinations and treatments for injuries

One-stop Service



1 Counseling support

Crisis/emergency counseling, additional/ongoing counseling, counseling education programs, and more

2 Medical support

Forensic evidence collection and emergency response and treatment support for victims

3 Investigative/legal support

Support in the investigation process, legal counseling and consultations, and more

4 Psychological support

Psychological evaluation and treatment; counseling for psychological support; treatment programs, and more

5 Accompaniment support

Support for physical access to counseling and psychological, investigative, legal, and medical support

6 Social support

Connection with external organizations and resources, care expense support, and more

Counseling Center

Types

Counseling centers for victims of sexual violence, domestic violence, and sex trafficking as well as for migrant women against violence*

Roles and Functions

Professional counseling, medical support, legal support, operation of treatment/recovery programs, referral to protective facilities, and more



Professional counseling

Counseling for victims of domestic violence, sexual violence, sex trafficking, and more



Medical support

Referral to hospitals and providing support for medical expenses



Legal support

Legal support such as pro bono legal services and appointment of a lawyer: companion service for accompaniment during investigations by the police/prosecution and trials



Operation of treatment/recovery programs

Operation of professional counseling for supporting the psychological stability of victims of VAW; treatment/recovery programs whose main contents are psychological treatment to restore mental and physical health, and more



Referral to protective facilities (if needed)

Transferring victims of VAW to connected protective facilities after professional counseling

* Counseling center for migrant women provides professional counseling both in Korean/native language regarding residence and employment, and also offers customized services for medical, legal, and shelter-related help for the victims of domestic violence, sexual violence, and sex trafficking.

Protective Facility for Victims of Violence against Women

Types

Protective facilities for victims of domestic violence and sexual violence; support facilities for victims of sex trafficking; and protective facilities for migrant women victimized by violence

Roles and Functions



Self-sufficiency Promotion Center

Types

Self-sufficiency promotion centers for victims of sex trafficking and migrant women victimized by violence

Roles and Functions



Establishment/operation of workplaces and similar facilities



Operation of employment projects

Support for participants in collaborative workplaces and internship programs



Support for changing jobs and social integration



Vocational training; education for entering school/acquiring skills
(including externally commissioned education)



Support for psychological stability and recovery as needed as part of the self-sufficiency process

The Advocacy Center for Online Sexual Abuse Victims

Roles and Functions

Performing measures **1.** through **3.** as follows on online sexual violence, including taking and distributing photos or videos without consent, and threats of distribution

1.



Initial counseling

2.





Assistance in the deletion of sexual abuse materials

3.



Links with support organizations for victims of VAW
(investigative/legal support, medical/psychological treatment, and connection to protective facilities)

Usage Guide

Can be reached by **phone** at  02-735-8994,
via the **online bulletin board** [<http://d4u.stop.or.kr>],
or through **Women's Emergency Hotline**  1366



Work Flow for Deletion Support

#1

Collection of sexual abuse materials

Harm confirmation and acceptance of application for deletion support, collection of sexual abuse materials/URLs, and more

#2

Search for images and videos through the deletion support system

Identification of the range of distribution through DNA filtering, image searching, and more

#3

Support for emergency deletion

Request for deletion by platform (relevant sites), request for blockage (Korea Communications Standards Commission), and collection and conveyance (National Police Agency) of evidence data

#4

Reporting on the results and monitoring redistribution

Sending outcome reports on deletion support by victim and monitoring for any redistribution (periodic monitoring)

Support for _____

Victims of Violence

against **W**omen

_____in **South Korea**



Women's Human Rights
Institute of Korea

[04505] 3F 50, Seosomun-ro, Jung-gu, Seoul, Republic of Korea
www.stop.or.kr | TEL 02-735-1050 | FAX 02-6363-8493