

General Information for International Scholars



Visa & Immigration

All non-immigrant visitors are required to have a valid visa in their passport to be allowed entry into the Republic of Korea.

During his/her stay in Korea, he/she is required to meet the guidelines for maintaining your visa status.

Visa Type for International Scholars

E-1 Professor

For individuals who seek to give lectures or conduct a special study at a college or university for more than 90 days.
Employment approval from Office of Academic Affairs is required.

E-3 Research

For individuals seeking to engage in research activities in a research institute or respective college department with an employment contract. Applications must be made by the inviting party(research institute or respective college department).

D-2-5 Research Study

For individuals who plans to engage in a specific research at a undergraduate/graduate college established in accordance with Higher Education Act. Applications must be made by the inviting party(research institute or respective college department).

For further information, Please visit website below.

Yonsei Global One-Stop Service Center

- Visa & Immigration
- For Scholars
- Applying for a Visa

<http://gosc.yonsei.ac.kr>



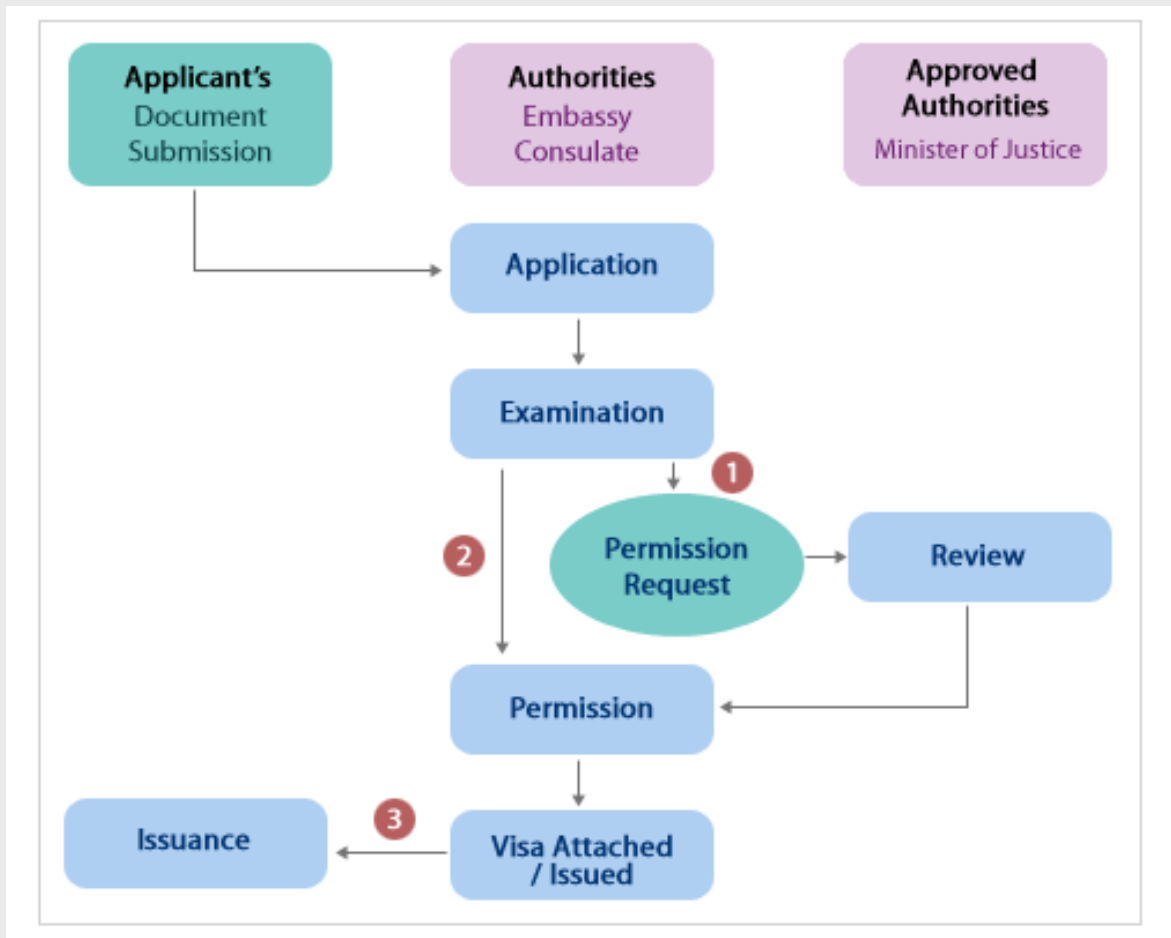
연세대학교
YONSEI UNIVERSITY

General Information for International Scholars



Visa & Immigration

General Visa Issuance Flow



For further information, Please visit website below.

HiKorea.go.kr by Ministry of Justice
<https://www.hikorea.go.kr/>



연세대학교
YONSEI UNIVERSITY

General Information for International Scholars



Visa & Immigration

Maintaining Visa Status

Foreigner Registration

Foreigners staying in Korea for more than 90 days must register for an Foreigner Registration Card at a local immigration office within 90 days from the date of entry. It is illegal to stay in Korea for more than 90 days without being registered, regardless of a visa at entry.

Extension of Stay

Professors who wish to continue lecturing or study activities at Yonsei beyond their valid visa period are required to apply for the visa extension. Application for an extension of stay should be submitted at least two months before your current visa's expiration date.

Report of Changes

If any of the following incidents should occur to a registered foreigner, it must be reported to the local Immigration within 15 days of its occurrence. A registered foreigner's failure to report the aforementioned incidents within 15 days from the date of occurrence will be considered a violation of Article 36 of the Immigration Act.

Re-Entry Permit

Registered foreigners (A-1 to A-3, D-1 to F-3, F-6 to H-2 status holders) should apply for a multiple Re-entry Permit to re-enter the Republic of Korea after spending more than 1 year and up to 2 years abroad from the date of departure.

For further information, Please visit website below.

Yonsei Global One-Stop Service Center

- Visa & Immigration
- For Scholars
- Maintaining a Visa

<http://gosc.yonsei.ac.kr>



연세대학교
YONSEI UNIVERSITY

General Information for International Scholars

On-Campus Housing Options

Main Campus - Shinchon

▶ SK-Global House

SK Global House opened in February 2010 providing a home-away-from home with international service standards. It provides 24-hour front desk operations and security system, which ensure convenient living and security. Guests can enjoy various facilities and services within a global community network.



▶ Avison House

Avison House is an on-campus accommodation for Yonsei Faculty members, which opened in 2017.



▶ Application Procedure

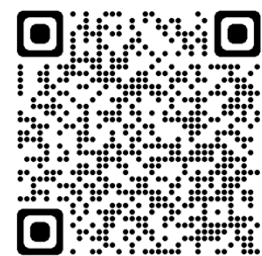
1. Send an official letter 'Guest House Reservation Request' to Yonsei University Housing Office.
2. Guest House user registration and reservation application
3. Payment of housing fees
4. Receive booking confirmation and reminder

For further information, Please visit website below.

Yonsei Global One-Stop Service Center

- Yonsei Life
- Housing
- For Scholars

<http://gosc.yonsei.ac.kr>



연세대학교
YONSEI UNIVERSITY

General Information for International Scholars

On-Campus Housing Options

International Campus - Songdo

▶ Songdo Green Home Rental Apartment

- Eligibility : Yonsei Faculty
- Room size: 130.10m²
- Facilities: 4 rooms, a living room, a kitchen, and 2 bathrooms
- Equipped with TV, refrigerator, washer machine, bed, desk, sofa

▶ Songdo Dormitory Faculty Room

- Eligibility : Yonsei Faculty
- Room size: 105.45m²~161.65m²
- Equipped with TV, refrigerator, washer machine, microwave, bed, desk



▶ Application Procedure

International faculty can apply for on-campus housing by sending an official letter via Administration Information System to Housing Office through their affiliated department office at Yonsei. It is required to check with the Housing Office at Songdo for vacancy and procedures before applying.

For further information, Please visit website below.

Yonsei Global One-Stop Service Center

➤ **Yonsei Life > Housing > For Scholars**

<http://gosc.yonsei.ac.kr>



연세대학교
YONSEI UNIVERSITY

General Information for International Scholars



Health Insurance

National Health Insurance (NHI)

The NHI program of Korea covers whole population as a compulsory social insurance system. The NHI is the only public insurance institution operated by the Ministry of Health and Welfare. NHI agreements differ by 2 types depending on whether the applicant is employed or self-employed.

All foreign workers and overseas Koreans who work for a workplace in Korea shall automatically be the employee insured since 1 January, 2006. The same insurance benefits for Korean citizens are applied to the benefits for foreigners. However, non-tenure track scholars, who receive only lecture fees without a fixed monthly salary, are not eligible for NHI.

► National Health Insurance Exclusion Application

1) Please check with NHIS call center for detailed exception conditions.

2) Required Document

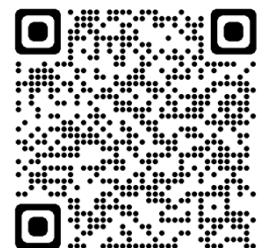
Documents verifying that medical guarantee, such as applications for exclusion of membership, insurance certificates, etc. is available

- France: exclusion application form(exclusion processes after checking Nationality)
- Japan: Japan health insurance card, exclusion application form
- U.S.A: Uniform Card or Blue Cross Blue Shield insurance card, exclusion application form

For further information, Please visit website below.

The National Health Insurance website

<https://www.nhis.or.kr/>



연세대학교
YONSEI UNIVERSITY

General Information for International Scholars



Yonsei Global One-Stop Service Center

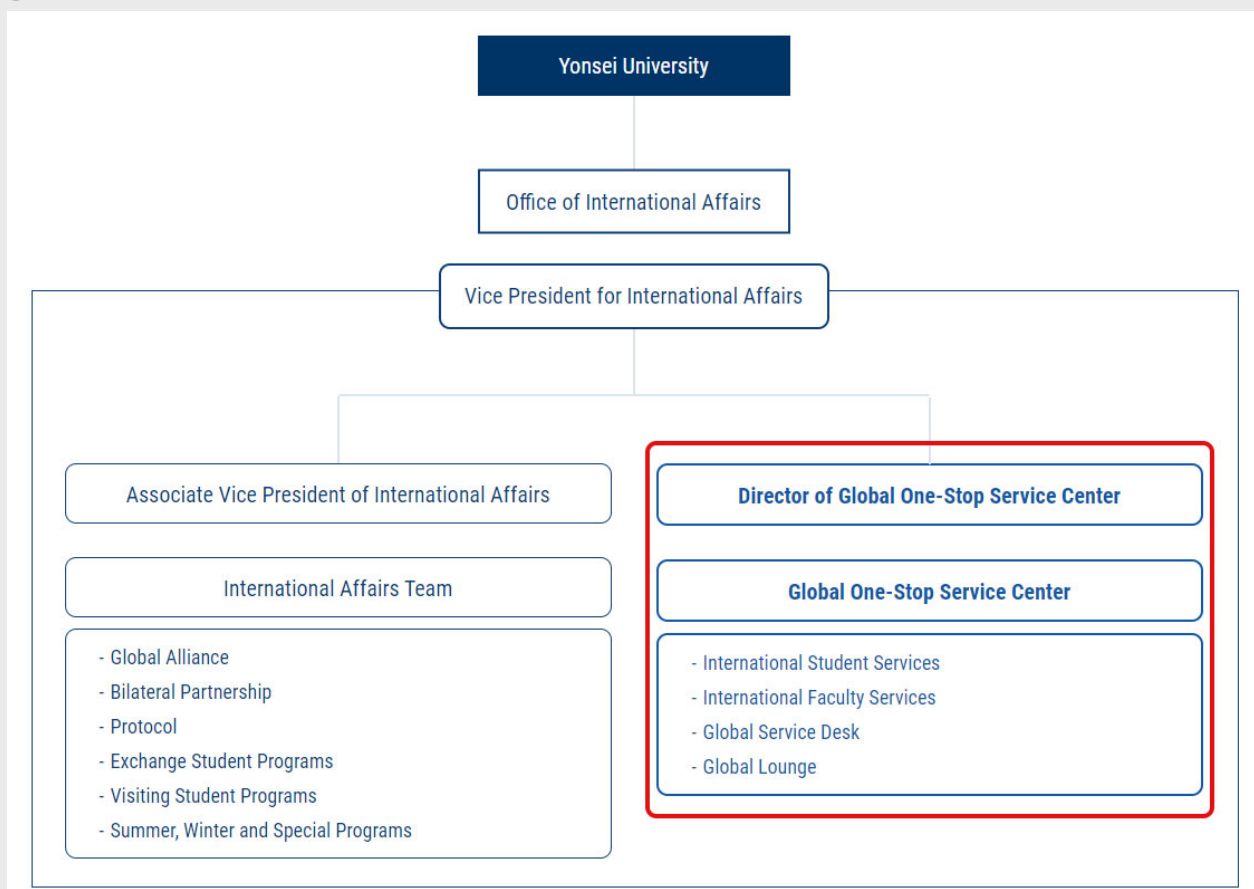
Introduction

Global One-Stop Service Center is established in September 2022 in order to support the international community at Yonsei University.

We have an increasing number of international students pursuing their dreams and international scholars dedicated to education and research at Yonsei University. Also, many of the exchange/visiting students come to Yonsei University to get academic achievement and experience life in Korea.

The Center supports their soft landing at Yonsei University by providing services from visa guidance to transition to a new environment. Our mission is to assist them in achieving their academic goals and enhance their potential skills at Yonsei University.

Organizational Structure



General Information for International Scholars



Yonsei Global One-Stop Service Center

Services

- Visa guidance for degree-seeking international students
- Assisting international faculty's adjustment at Yonsei University
- Providing international students/scholars with various on and off campus resources information
- Developing and promoting various extra-curricular programs and events for international students
- Supporting our departments and administrations for international students/scholars services

Global Service Desk

The Global Service Desk is located in the Global Lounge, Baekyangnuri on the main campus, so that international students and scholars can easily access it. At the Global Service Desk, quick and simple inquiries or consultations are offered, and for a more accurate and detailed consultation, we will guide you to the departments or administrations related to the question.



GOSC Website : <http://gosc.yonsei.ac.kr>



연세대학교
YONSEI UNIVERSITY